

## Course Schedule

**IMPORTANT: ALL TIMES EASTERN** - Please see the [University Policies](#) ([/d2l/common/dialogs/quickLink/quickLink.d2l?ou=820883&type=content&rCode=uWaterloo-461265](#)) section of your Course Outline for details

Week	Module	Content	Activities and Assessments	End/Due Date	Weight (%)
Week 1	<a href="#">Module 0: Course Overview and Foundational Knowledge</a> ( <a href="#">/d2l/common/dialogs/quickLink/quickLink.d2l?ou=820883&amp;type=content&amp;rCode=uWaterloo-3209391</a> )	0a. Constitution of Canada & the Charter of Rights and Freedoms  0b. Common Law Versus Civil Law  0c. Canada's Truth and Reconciliation Commission	<b>Introduce Yourself</b> ( <a href="#">/d2l/common/dialogs/quickLink/quickLink.d2l?ou=820883&amp;type=content&amp;rCode=uWaterloo-461267</a> )  <b>Review Writing Tips</b> ( <a href="#">/d2l/common/dialogs/quickLink/quickLink.d2l?ou=820883&amp;type=content&amp;rCode=uWaterloo-3561032</a> )		Ungraded
Week 2	<a href="#">Module 1: What is Law?</a> ( <a href="#">/d2l/common/dialogs/quickLink/quickLink.d2l?ou=820883&amp;type=content&amp;rCode=uWaterloo-461273</a> )	1a. Classical Natural Law  1b. Contemporary Natural Law			
Week 3		1c. Classical Legal Positivism  1d. Contemporary Legal Positivism	<b>Quiz 1</b> ( <a href="#">/d2l/common/dialogs/quickLink/quickLink.d2l?ou=820883&amp;type=content&amp;rCode=uWaterloo-461268</a> )	Friday, September 30, 2022 at 11:55 PM	5%
Week 4		1e. Legal Realism	<b>Assignment 1: Theories of Law</b> ( <a href="#">/d2l/common/dialogs/quickLink/quickLink.d2l?ou=820883&amp;type=content&amp;rCode=uWaterloo-461269</a> )	Friday, October 7, 2022 at 11:55 PM	20%
Week 5	<a href="#">Module 2: Why Law?</a> ( <a href="#">/d2l/common/dialogs/quickLink/quickLink.d2l?ou=820883&amp;type=content&amp;rCode=uWaterloo-3372782</a> )	2a. Justice, Fairness, Equality	Check which group you are in for <b>Reflection 1</b> ( <a href="#">/d2l/common/dialogs/quickLink/quickLink.d2l?ou=820883&amp;type=content&amp;rCode=uWaterloo-3507862</a> )	Check after Wednesday, October 12, 2022 at 4:30 PM	
<b>Reading Week (Saturday, October 8, 2022 to Sunday, October 16, 2022)</b>					
Week 6		2b. Power, Violence, and Social Norms	<b>Reflection 1</b> ( <a href="#">/d2l/common/dialogs/quickLink/quickLink.d2l?ou=820883&amp;type=content&amp;rCode=uWaterloo-3507862</a> )	<b>Reflection:</b> Friday, October 21, 2022 at 11:55 PM  <b>Discussion:</b> Friday, October 28, 2022 at 11:55 PM	10%
Week 7	<a href="#">Module 3: Whose Law? Capitalism, Patriarchy, Colonialism</a> ( <a href="#">/d2l/common/dialogs/quickLink/quickLink.d2l?ou=820883&amp;type=content&amp;rCode=uWaterloo-3494490</a> )	3a. Marxist Jurisprudence	<b>Quiz 2</b> ( <a href="#">/d2l/common/dialogs/quickLink/quickLink.d2l?ou=820883&amp;type=content&amp;rCode=uWaterloo-461268</a> )	Friday, November 4, 2022 at 11:55 PM	5%
Week 8		3b. Feminist Legal Theory and Intersectionality – Part 1  3c. Feminist Legal Theory and Intersectionality – Part 2	<b>Quiz 3</b> ( <a href="#">/d2l/common/dialogs/quickLink/quickLink.d2l?ou=820883&amp;type=content&amp;rCode=uWaterloo-461268</a> )	Friday, November 11, 2022 at 11:55 PM	5%
Week 9		3d. Colonialism and Sovereignties of Law – Part 1  3e. Colonialism and Sovereignties of Law – Part 2  3f. Colonialism and Sovereignties of Law – Part 3	<b>Quiz 4</b> ( <a href="#">/d2l/common/dialogs/quickLink/quickLink.d2l?ou=820883&amp;type=content&amp;rCode=uWaterloo-461268</a> )	Friday, November 18, 2022 at 11:55 PM	5%

Week 10	<a href="https://d2l.common/dialogs/quickLink/quickLink.d2l?ou=820883&amp;type=content&amp;rcode=uWaterloo-3552577">Module 4: Where is Law?</a> <a href="https://d2l.common/dialogs/quickLink/quickLink.d2l?ou=820883&amp;type=content&amp;rcode=uWaterloo-3552577">(/d2l/common/dialogs/quickLink/quickLink.d2l?ou=820883&amp;type=content&amp;rcode=uWaterloo-3552577)</a>	4a. Spaces of Law 4b. Spatial Justice			
Week 11		4c. Law's Environment	<a href="https://d2l.common/dialogs/quickLink/quickLink.d2l?ou=820883&amp;type=content&amp;rcode=uWaterloo-3508490">Reflection 2</a> <a href="https://d2l.common/dialogs/quickLink/quickLink.d2l?ou=820883&amp;type=content&amp;rcode=uWaterloo-3508490">(/d2l/common/dialogs/quickLink/quickLink.d2l?ou=820883&amp;type=content&amp;rcode=uWaterloo-3508490)</a>	Friday, December 2, 2022 at 11:55 PM	5%
Week 12		4d. The Study of Law: What? Why? Who? Where?	<a href="https://d2l.common/dialogs/quickLink/quickLink.d2l?ou=820883&amp;type=content&amp;rcode=uWaterloo-3507861">Assignment 2: Spatial Justice Walk</a> <a href="https://d2l.common/dialogs/quickLink/quickLink.d2l?ou=820883&amp;type=content&amp;rcode=uWaterloo-3507861">(/d2l/common/dialogs/quickLink/quickLink.d2l?ou=820883&amp;type=content&amp;rcode=uWaterloo-3507861)</a>	Friday, December 16, 2022 at 11:55 PM	45%



**There is no final examination for this course**

# Contact Information

## Announcements



You are expected to check **Announcements** on the **Course Home** page on a regular basis. To ensure you are viewing the complete list of announcements, you may need to click **Show All Announcements**.

## Discussions

Discussion topics can be accessed by clicking **Connect** and then **Discussions** on the course navigation bar above. A [General Discussion](#) topic has also been made available to allow students to communicate with peers in the course. Your instructor may drop in at this discussion topic.

## Contact Us

Who and Why	Contact Details
<p><b>Instructor and TA</b></p> <ul style="list-style-type: none"> <li>• Course-related questions (e.g., course content, deadlines, assignments, etc.)</li> <li>• Questions of a personal nature</li> </ul>	<p><b>Post your course-related questions</b> to the <a href="#">Ask the Instructor</a> discussion topic. This allows other students to benefit from your question as well.</p> <p><b>Questions of a personal nature</b> can be directed to your instructor or your TA.</p> <p>Instructor: Dr Anastasia Tataryn  <a href="mailto:atataryn@uwaterloo.ca">atataryn@uwaterloo.ca</a></p> <p>TA: Farah El-Shayeb  <a href="mailto:felshaye@uwaterloo.ca">felshaye@uwaterloo.ca</a></p> <p>Your instructor checks email and the <a href="#">Ask the Instructor</a> discussion topic frequently and will make every effort to reply to your questions within 24–48 hours, Monday to Friday.</p>

<p><b>Technical Support,</b> Centre for Extended Learning</p> <ul style="list-style-type: none"><li>• Technical problems with Waterloo LEARN</li></ul>	<p><a href="mailto:learnhelp@uwaterloo.ca">learnhelp@uwaterloo.ca</a></p> <p>Include your full name, WatIAM user ID, student number, and course name and number.</p> <p>Technical support is available during regular business hours, Monday to Friday, 8:30 AM to 4:30 PM (Eastern Time).</p> <p><a href="#">IST Knowledge Base: For Students</a></p>
<p><b>Learner Support Services,</b> Centre for Extended Learning</p> <ul style="list-style-type: none"><li>• General inquiries</li><li>• Examination information</li></ul>	<p><a href="#">Student Resources</a> </p> <p><a href="mailto:extendedlearning@uwaterloo.ca">extendedlearning@uwaterloo.ca</a> </p> <p>Include your full name, WatIAM user ID, student number, and course name and number.</p>

# Course and Department Policies

## Course Policies

### Late Assignments

---

An assignment submitted any time after the time specified as the due date and time will lose 5%. The assignment will continue to lose 5% on every additional day it is late until the Dropbox closes (one week after the deadline).

### Assignment Submissions

---

Assignments are to be submitted by LEARN Dropbox ONLY.

## Department Policies

# Policy on Extenuating Circumstances

---

Students are expected to take responsibility for making appropriate judgments to ensure that their assignments are submitted by the due date. It is also students' responsibility to back up their work electronically. Please alert the instructor or technical support to any difficulties that you may be experiencing with course work in a timely manner so that we can provide appropriate assistance.

Students must provide appropriate documentation to support requests for extensions. If you miss a deadline, you must notify the professor within one week of the submission date to request permission to submit under extenuating circumstances. These will only be considered if there are legitimate medical, compassionate, or religious grounds. In the case of medical grounds, you must provide a University of Waterloo Verification of Illness Form or documentation from AccessAbility Services. In the case of compassionate grounds, you must provide documentation. In the case of religious grounds, a due date or test date must conflict with an important UW-recognized

religious holiday on your religious calendar, and you must tell the professor within the first four weeks of the course.

Documentation must be submitted to the professor. Extensions will not be granted due to travel, employment, weddings, or other personal commitments.

Please note that requests for extensions and extenuating circumstances must go directly to the instructor.

## Privacy and Permissions

---

Materials, lectures, and all audio, video, and written content on LEARN is not to be circulated or reproduced beyond LEARN and LS 101. Please be considerate and respectful of your colleagues', your instructor's, and TAs' privacy.

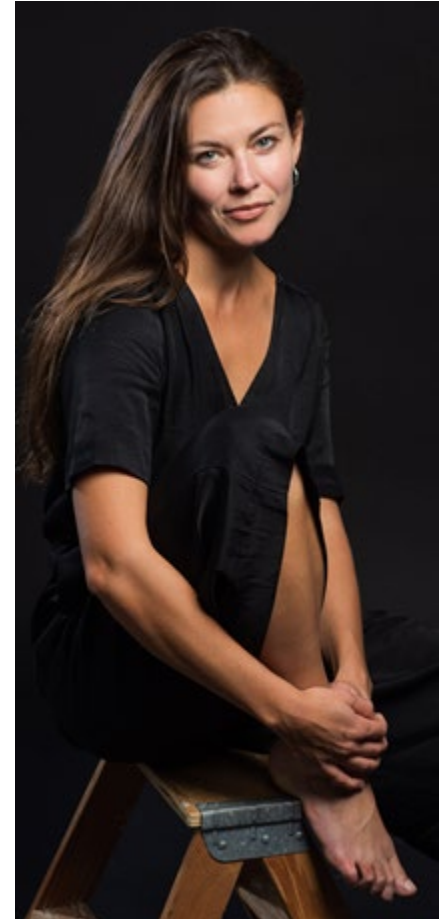
The course author maintains copyright over this course (recordings, syllabus included). It is not to be copied or reproduced for any purposes without explicit permission.

# About the Course Author and Instructor

## Course Author and Instructor — Dr. Anastasia Tataryn

I joined the faculty at St Jerome's University, at the University of Waterloo in January 2020. Prior to that, I lived in the UK for 10 years. I first moved to London, UK, to complete my PhD in Law at Birkbeck, University of London. One thing led to another and after finishing my PhD, I taught at the University of Warwick for a year, then landed a permanent position as a Lecturer in Law at the University of Liverpool. Moving back to Canada right before the pandemic was quite a transition, but I am glad to be closer to my family and to re-familiarise myself with the country. I was drawn to study and further a career in legal research because of law's incredible power and potential to touch on, and affect, so many aspects of our life and world. My research explores intersections between labour & work, migration, ecology, and how we define or think about the limits within communities, our ideas and knowledge. I am always interested in exploring questions through new and creative approaches, not just academic but through different art forms including dance and movement.

<https://www.anastazyatataryn.net/> 



© Ema Suvajac Photography




# Materials and Resources

## Textbook

There is no required textbook for this course.

## Course Reserves

[Course Reserves for Students](#)  are used in this course. Course Reserves can be accessed using the **Library Resources** widget on the **Course Home** page.

## Resources

- Library services for [Co-op students on work term and students taking online courses](#) 

# Grade Breakdown

The following table represents the grade breakdown of this course.

<b>Activities and Assessments</b>	<b>Weight</b>
Introduce Yourself	Ungraded
Quizzes (4 x 5% each)	20%
Assignment 1: Theories of Law	20%
Reflection 1	10%
Reflection 2	5%
Assignment 2: Spatial Justice Walk	45%

## Official Grades

Official Grades and Academic Standings are available through [Quest](#) .

# Course Description and Learning Outcomes

## Course Description

This interdisciplinary course examines the origins of modern legal systems and legal thinking, to consider the impact of law on society, and society on law. This course will introduce students to the study of law and legal studies by looking at modern law's structures, sources, and scope from a critical, cross-cultural, and mixed-media perspective. We will do this by exploring the historical, political, economic, and cultural context under which law arises and functions within modern Western society, and its effect on people, institutions, diversity and life.

## Learning Outcomes

Upon completion of the course, students will be able to:

1. Demonstrate familiarity with key terms, debates, and theoretical approaches in the field of legal studies.
2. Identify and analyse popular and scholarly conceptions of law, and the roles law plays in society.
3. Identify the different forms law takes in daily life and the ways different people experience the law.
4. Critically discuss major themes and debates in legal studies. This may include the relationship between law and justice; law and economics; law and culture, race and gender; law and environment; how law is used as a tool of the powerful and by those that are marginalized; and the way the study and analysis of law has evolved alongside social, cultural, political, and economic change.

# University Policies

## Submission Times

Please be aware that the University of Waterloo is located in the **Eastern Time Zone** (GMT or UTC-5 during standard time and UTC-4 during daylight saving time) and, as such, the time that your activities and/or assignments are due is based on this zone. If you are outside the Eastern Time Zone and require assistance with converting your time, please try the [Ontario, Canada Time Converter](#) .

## Accommodation Due to Illness

**If your instructor has provided specific procedures for you to follow if you miss assignment due dates, term tests, or a final examination, adhere to those instructions.** Otherwise:

### Missed Assignments/Tests/Quizzes

---

Contact the instructor as soon as you realize there will be a problem, and preferably within 48 hours, but no more than 72 hours, have a medical practitioner complete a [Verification of Illness Form](#) .

**Email** a scanned copy of the Verification of Illness Form to your instructor. In your email to the instructor, provide your name, student ID number, and exactly what course activity you missed.

Further information regarding Management of Requests for Accommodation Due to Illness can be found on the [Accommodation due to illness](#) page.

### Missed Final Examinations

---

Contact your instructor as soon as possible if you are unable to fulfill academic requirements due to illness or other extenuating circumstances.

Further information about Examination [Accommodations](#) is available in the Undergraduate Calendar.

# Academic Integrity

In order to maintain a culture of academic integrity, members of the University of Waterloo community are expected to promote honesty, trust, fairness, respect, and responsibility. **If you have not already completed the online tutorial regarding academic integrity you should do so as soon as possible.** Undergraduate students should see the [Academic Integrity Tutorial](#) and graduate students should see the [Graduate Students and Academic Integrity](#) website.

Proper citations are part of academic integrity. Citations in CEL course materials usually follow CEL style, which is based on APA style. Your course may follow a different style. If you are uncertain which style to use for an assignment, please confirm with your instructor or TA.

For further information on academic integrity, please visit the [Office of Academic Integrity](#).

## Turnitin

**Turnitin.com:** Text matching software (Turnitin®) may be used to screen assignments in this course. Turnitin® is used to verify that all materials and sources in assignments are documented. Students' submissions are stored on a U.S. server, therefore students must be given an alternative (e.g., scaffolded assignment or annotated bibliography), if they are concerned about their privacy and/or security. Students will be given due notice, in the first week of the term and/or at the time assignment details are provided, about arrangements and alternatives for the use of Turnitin® in this course.

It is the responsibility of the student to notify the instructor if they, in the first week of term or at the time assignment details are provided, wish to submit the alternate assignment.

[Turnitin® at Waterloo](#)

## Discipline

A student is expected to know what constitutes [academic integrity](#) to avoid committing an academic offence, and to take responsibility for his/her actions. A student who is unsure whether an action constitutes an offence, or who needs help in learning how to avoid offences (e.g., plagiarism, cheating) or about "rules" for group work/collaboration,

should seek guidance from the course instructor, academic advisor, or the undergraduate Associate Dean. For information on categories of offences and types of penalties, students should refer to [Policy 71 - Student Discipline](#) . For typical penalties, check [Guidelines for the Assessment of Penalties](#) .

## Appeals

A decision made or penalty imposed under [Policy 70 - Student Petitions and Grievances](#) , (other than a petition) or [Policy 71 - Student Discipline](#) , may be appealed if there is a ground. A student who believes he/she has a ground for an appeal should refer to [Policy 72 - Student Appeals](#) .

## Grievance

A student who believes that a decision affecting some aspect of his/her university life has been unfair or unreasonable may have grounds for initiating a grievance. Read [Policy 70 - Student Petitions and Grievances](#) , Section 4. When in doubt please be certain to contact the department's administrative assistant who will provide further assistance.

## Final Grades

In accordance with [Policy 46 - Information Management](#) , Appendix A - Access to and Release of Student Information, the Centre for Extended Learning does not release final examination grades or final course grades to students. Students must go to [Quest](#) to see all final grades. Any grades posted in Waterloo LEARN are unofficial.

## AccessAbility Services

[AccessAbility Services](#) , located in Needles Hall, collaborates with all academic departments to arrange appropriate accommodations for students with disabilities without compromising the academic integrity of the curriculum. If you require academic accommodation to lessen the impact of your disability, please register with AccessAbility Services at the beginning of each academic term and for each course.

## Accessibility Statement

The Centre for Extended Learning strives to meet the needs of all our online learners. Our ongoing efforts to become aligned with the [Accessibility for Ontarians with Disabilities Act \(AODA\)](#) are guided by University of Waterloo accessibility [Legislation](#) and policy and the [World Wide Web Consortium's \(W3C\) Web Content Accessibility Guidelines \(WCAG\) 2.0](#). The majority of our online courses are currently delivered via the Desire2Learn Learning Environment. Learn more about [Desire2Learn's Accessibility Standards Compliance](#).

## Use of Computing and Network Resources

Please see the [Guidelines on Use of Waterloo Computing and Network Resources](#).

## Copyright Information

### UWaterloo's Web Pages

All rights, including copyright, images, slides, audio, and video components, of the content of this course are owned by the course author and the University of Waterloo, unless otherwise stated. By accessing this course, you agree that you may only download the content for your own personal, non-commercial use. You are not permitted to copy, broadcast, download, store (in any medium), transmit, show or play in public, adapt, or change in any way the content of these web pages for any other purpose whatsoever without the prior written permission of the course author and the University of Waterloo, Centre for Extended Learning.

### Other Sources

Respect the copyright of others and abide by all copyright notices and regulations when using the computing facilities provided for your course of study by the University of Waterloo. No material on the Internet or World Wide Web may be reproduced or distributed in any material form or in any medium, without permission from copyright holders or their assignees. To support your course of study, the University of Waterloo has provided hypertext links to relevant websites, resources, and services on the web. These resources must be used in accordance with any registration requirements or conditions which may be specified. You must be aware that in providing such hypertext links, the University of Waterloo has not authorized any acts (including reproduction or

distribution) which, if undertaken without permission of copyright owners or their assignees, may be infringement of copyright. Permission for such acts can only be granted by copyright owners or their assignees.

If there are any questions about this notice, please contact the University of Waterloo, Centre for Extended Learning, Waterloo, Ontario, Canada, N2L 3G1 or [extendedlearning@uwaterloo.ca](mailto:extendedlearning@uwaterloo.ca) (<mailto:extendedlearning@uwaterloo.ca>).

---

University of Waterloo

[Credits and Copyright \(/d2l/common/dialogs/quickLink/quickLink.d2l?](#)

[ou=820883&type=content&rCode=uWaterloo-460859\)](#)